

Australian Drylands

Adaptation checklist and climate resilient plants for your garden.

Australian drylands plants are adapted to thrive in hot and dry climates, making them ideal choices for your garden, balcony or windowsill. Use this guide when choosing plants: look for the adaptations on this checklist and refer to the plant list that follows for the Australian Drylands horticulture team's top recommendations for home gardens.



Water-wise

Fleshy stems to store water, deep water-seeking roots or reduced transpiration (water lost through leaves) are some adaptations to dry climates.



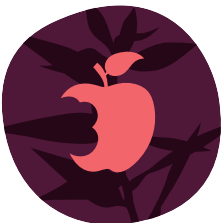
Fire-resilient

Some plants are adapted to withstand and survive fire whilst some rely on fire to thrive.



Sun-smart

Plants adapted to hot climates sometimes have silvery or hairy leaves that act as sunscreen.



Nutrient-savvy

Plants adapted to low-nutrient soils need less fertiliser. Some have root-dwelling microbes to maximise nutrient uptake.



Wildlife-attracting

Native plants attract native pollinators which are crucial to a healthy ecosystem.

Choosing resilient plants for your garden

PLANT	NOTES
<i>Macrozamia Communis</i>	<i>Macrozamia communis</i> is a great cycad species for home gardeners as it self-sows readily and has a year-round lush, green mass. It fits in perfectly with tropical and palm gardens and is very drought tolerant. A great set and forget plant.
<i>Doryanthes palmeri</i> Giant spear Lily	Great addition to any garden! They're very nectar rich, so birds really love them.
<i>Livistona australis</i> Cabbage Tree Palm	This long-lived species of palm is a fantastic addition to any garden. Consider it a substitute for exotic palm species.
<i>Brachychiton acerifolius</i>	Wonderful tree, large though, beautiful flowers that scatter on the ground. Drought tolerant and quick growing.
<i>Brachychiton rupestris</i> Bottle tree	Same attributes as <i>Brachychiton rupestris</i> , but smaller for smaller spaces.
<i>Bursaria spinosa</i> Sweet Bursaria (fire)	Great for wildlife and very drought tolerant. Can be a bit spiky though!
<i>Hypocalymma angustifolium</i>	Drought tolerant, we love its beautiful pink flowers.
<i>Hypocalymma robustum</i> Swan River Myrtle	Drought tolerant, and stunning flowers.
<i>Chamelaucium</i> Wax flower	Drought tolerant, lovely flowers.
<i>Coleus (many species)</i> Plectranthus	Good for dry shade and bees just love the flowers. This plant is the perfect alternative to exotic <i>Lamiaceae</i> shrubs/groundcovers.
<i>Dodonaea (many species)</i> Hop Bush	Many different species available, great shrub/trees and groundcovers.
GRASSES	
<i>Dichelachne crinita</i> Plume grass	Wonderful addition to any garden, drought tolerant, insect attracting so you're doing your bit for the ecosystem.
<i>Rytidosperma richardsonii</i> Wallaby grass	
<i>Themeda triandra</i> Kangaroo grass	
<i>Austrostipa verticillata</i> Stipa	
<i>Austrostipa elegantissima</i>	
<i>Hakea flabellifolia</i>	Drought tolerant, interesting foliage, you'll love it in your garden.
<i>Linum marginale</i> Native flax	Easy to grow from seed, beautiful wispy addition to any garden. Drought tolerant repeat flowers throughout the year.