

Royal Botanic Gardens Cranbourne

LIGHTFALL

Visual Story



Presented by



Royal
Botanic
Gardens
Cranbourne



SONY MUSIC

Presenting Partner



City of
Casey

Contact Details



Visitor Information:

(03) 5990 2200 (9am – 5pm ONLY)

Email:

lightfall@rbg.vic.gov.au

Other Resources:

[FAQ's](#)

[Website](#)

Getting to *Lightfall*

Car

Entry to *Lightfall* is only via the West Entrance of Royal Botanic Gardens Cranbourne. If you live locally, this is probably not the way you usually come. The West Entrance is located at the end of Ballarto Road. It can only be accessed from the Cranbourne-Frankston Road direction, the easiest way to find it is to:

Enter Donnelly's Garden Supplies into your GPS or maps app, and follow directions to the corner of Ballarto and Cranbourne-Frankston Roads. Continue through to the end of Ballarto Road for *Lightfall* entry.

There will be no other entrance to *Lightfall* - the East Entrance near South Gippsland Highway, including all internal roads, are closed with strictly no entry. On busier nights, you may be directed to the overflow car park and bussed back to the *Lightfall* entrance. The overflow car park is also accessed via Ballarto Road and staff will be on hand to guide you when you arrive.

Introduction

This access guide is designed for people attending *Lightfall* 2025.

In this visual story, you will find information about what to expect when you attend *Lightfall* at Royal Botanic Gardens Cranbourne. Please look out for the icons below in this visual story, so you know what to expect on your *Lightfall* journey.

We hope you enjoy *Lightfall* 2025.



Things that you can **see**.



Things that you can **smell**.



Things that you can **hear**.



Scan the QR code to learn more about the artworks and the artist.

The Venue

Lightfall will be held in Royal Botanic Gardens Cranbourne. You may have been to the Botanic Gardens before. However, as this is a special event held at night when the gardens are not usually open, the Gardens are likely to look, feel and sound different to the last time you were here.



The Royal Botanic Gardens are like a museum for living plants. Help us protect our precious plants and stay on the path at all times and do not enter the garden beds.



Please respect the wildlife; native animals – including snakes – live at the Gardens too. If you see them, please give them space.



Event Description

Lightfall is a **1km illuminated trail** through Royal Botanic Gardens, Cranbourne after dark. You will follow a special designated path through the Gardens and pass by, under and through many different light installations. The installations are accompanied by music. The pathway is well lit and there are ushers at points along the trail who can help you find your way.

Event Duration

Depending on the pace you take and how often you are stopping along the trail, you should allow about 45 – 60 mins to enjoy the full experience.

Content Warnings

Lightfall will contain some bright lights that flash, flicker and change colour. There are dynamic flashes of white light and fast colour changes, but no strobe lighting. Some lights are also patterned. There are candles, lighting treatments and some slightly loud and atmospheric music in some locations. There may also be crowds and queues in some locations.

There might also be traffic to get into and out of the car park.

What to Wear

The whole event is outside, so make sure you check the weather before you attend and wear appropriate clothing. Please wear walking shoes as the trail is 1km long. You may also want to bring a rain jacket or umbrella depending on the weather forecast. *Lightfall* will go ahead if it is raining.

The sound will be a combination of atmospheric and energetic music. It might make you want to dance! You might also want to bring ear protection if you are sensitive to sound.

You are also welcome to bring a torch.

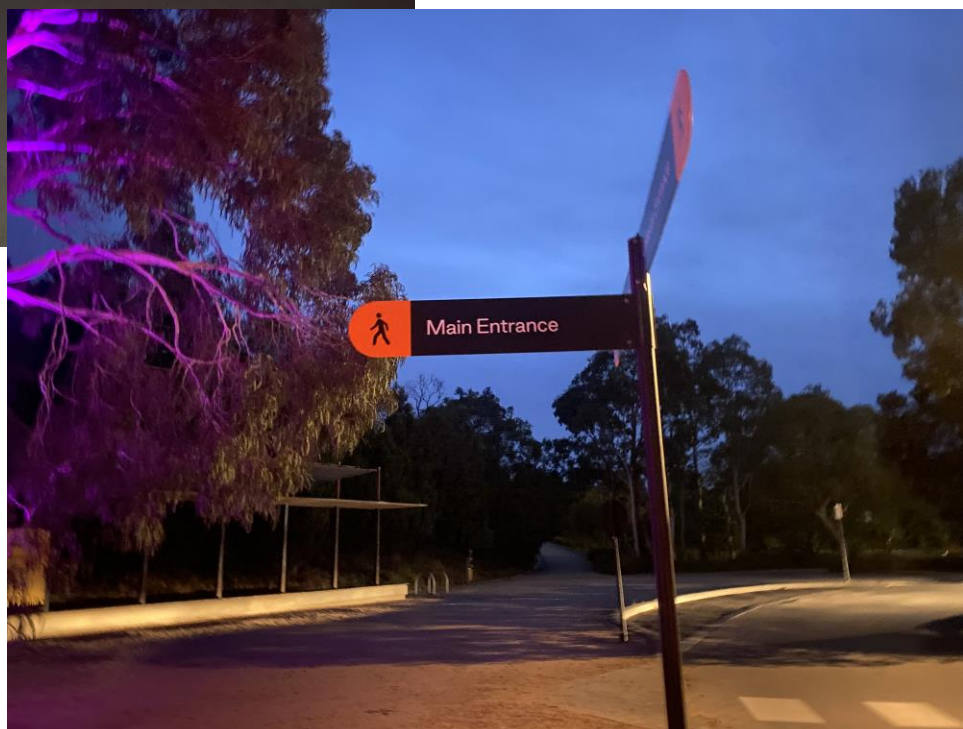
What happens if I need a break?

Please let one of our friendly ushers know if you would like to leave the trail and they can help you to an exit or to a quiet area. Please stay on the designated paths except when accompanied by a staff member.

Staff will be close by and are always happy to assist.

Car Park / Entrance

Once you have parked your car, note the row letter (A, B, C) as the trail exit is not the same as the entrance. When you're ready, you can head to the main entrance which will take you up to the Visitor Centre. The car park has red lighting.



Entrance

Access to the entrance of *Lightfall* is via a gentle sloped, sealed pathway. There are rest areas at the halfway point on the left. This 90-metre-long pathway is 5 metres wide offering a clear path of travel at a 1:22 gradient from the carpark up to the Visitor Centre. Look for this sign near a group of eucalyptus trees that are lit, they mark the beginning of the path up to the entrance.



Wominjeka



As you make your way up the hill to get your ticket scanned you will see a large, glowing word that says "Wominjeka". "Wominjeka" means "Welcome" in Boonwurrung language.



Hear a Welcome to Country from Bunurong Elder, Josh West.



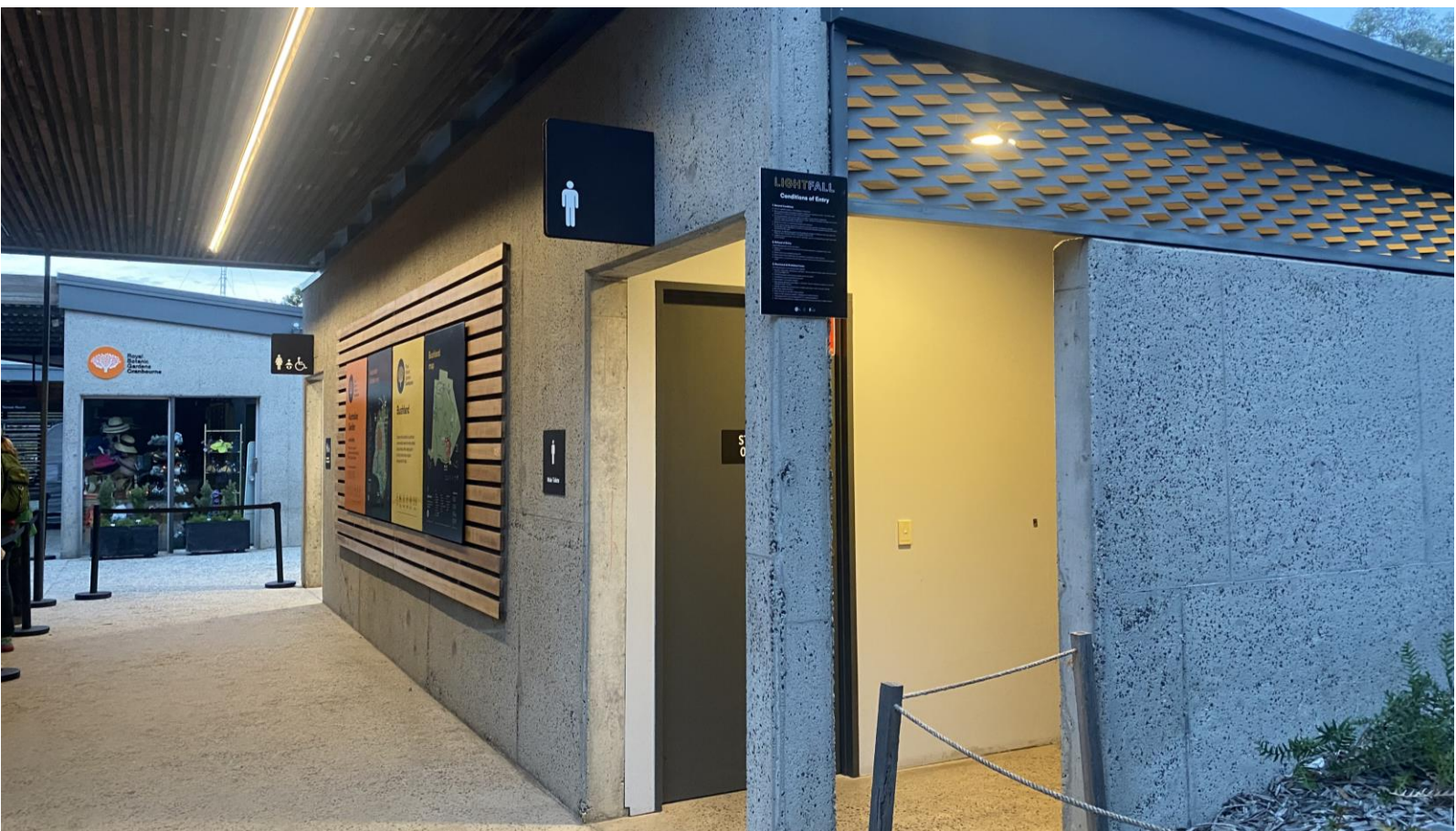
Visitor Centre and Toilets

Once you have made your way to the top of the slope, you will reach the Visitor Centre and the ticket scanning point on the left side and toilets on the right.

There is a Ticketek help desk inside, if you need assistance. If you have any questions or require assistance related to a ticket enquiry, one of the Ticketek staff can help.

The Visitor Centre is where you collect a wheelchair for loan if you need one. [Click here](#) to book a wheelchair in advance. There are a small number available. You will need to bring it back to the Visitor Centre once you have finished the trail.

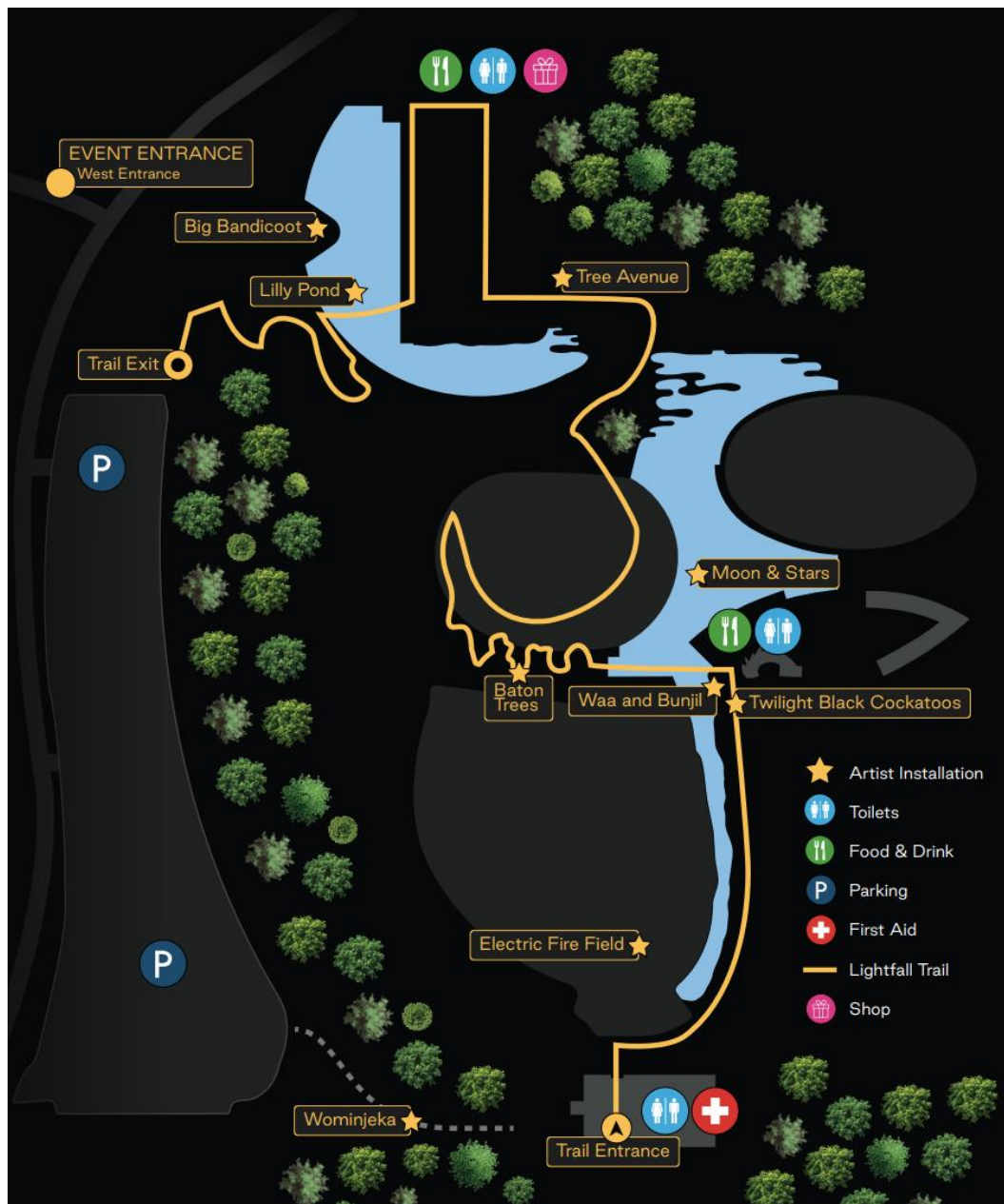
Here's a picture of the bathrooms close to the Visitor Centre.



Finding your way

Please see below map, which you can refer to through your *Lightfall* journey.

There are toilets and places to buy food and drinks along the way, as well as spots to rest.



Need help?

There is staff dotted along the *Lightfall* trail that are there to help if you need assistance. You will see them dressed in black with green vests, and *Lightfall* lanyards dotted throughout the trail.



What you will see



Bright lights, colours and large shapes. Some of them are on water.



Illuminated trees and lighting treatments on the lakes and landscape throughout the trail.

What you will see



Installation Signage

Scan the QR code on installations to learn more about the artworks.



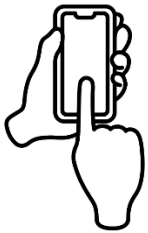
Electric Fire Field



A large flat area of red sand lit up with hundreds of fire lit candles in a circular pattern.



You will hear soft and gentle accompanying music. *Elements* by James Henry. [Click here](#) to listen.



Scan the QR code to learn more about this artwork and the artist.



Artworks by Stacey Edwards



Colourful and patterned artworks by First Nations artist Stacey Edwards. These pieces line the shelter as you enter the food area.



Scan the QR code to learn more about this artwork and the artists.



Main food area and toilets

This is the main food area for *Lightfall*. There are only refreshments and ice-creams ahead at the next stop.



See people eating, food trucks, tables and umbrellas.



Hear music, people talking, and the stewards directing people to get their tickets scanned.



Smell all the delicious food from the two food trucks.



Moon and Stars



Bright stars and a glowing moon on the horizon of the lake, illuminating the water.



Hear soulful and expressive music. *Iuk Eel Season* by James Henry.

[Click Here](#) to listen.



Baton Trees



Long, skinny tubes of light that have been installed onto the trees lining the path. The light moves up and down the trees in patterns, in time with the music.



Energetic and rhythmic music. *Tanderrum* by James Henry. [Click Here](#) to listen



The Kiosk and last toilet stop

This area has a kiosk that sells drinks and ice creams, as well as toilets and a pop-up shop.

This is the last toilet area before you have to get in your car.



See the pop-up shop, where you can buy toys and sweets! There may be some queuing in this area.



Hear loud and energetic music, and people talking



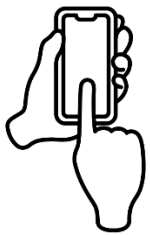
Big Bandicoot



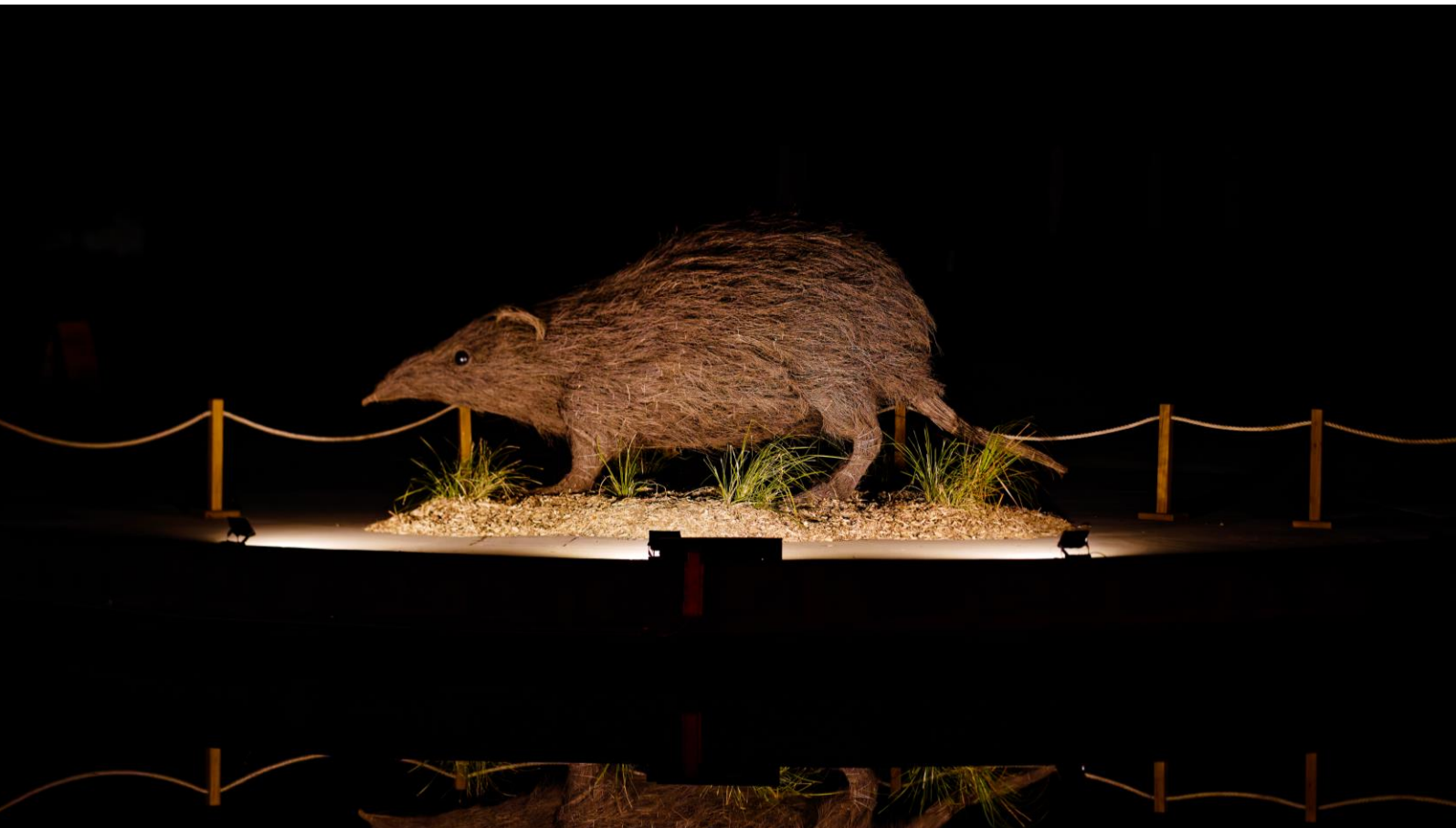
See the Big Bandicoot sculpture lit up across the water on the edge of the Lake Precinct.



Hear an accompanying soundscape with sounds of the Gardens.



Scan the QR code to learn more about this artwork and the Southern Brown Bandicoot.



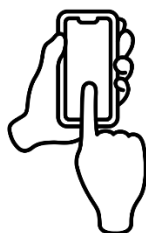
Lily Pond



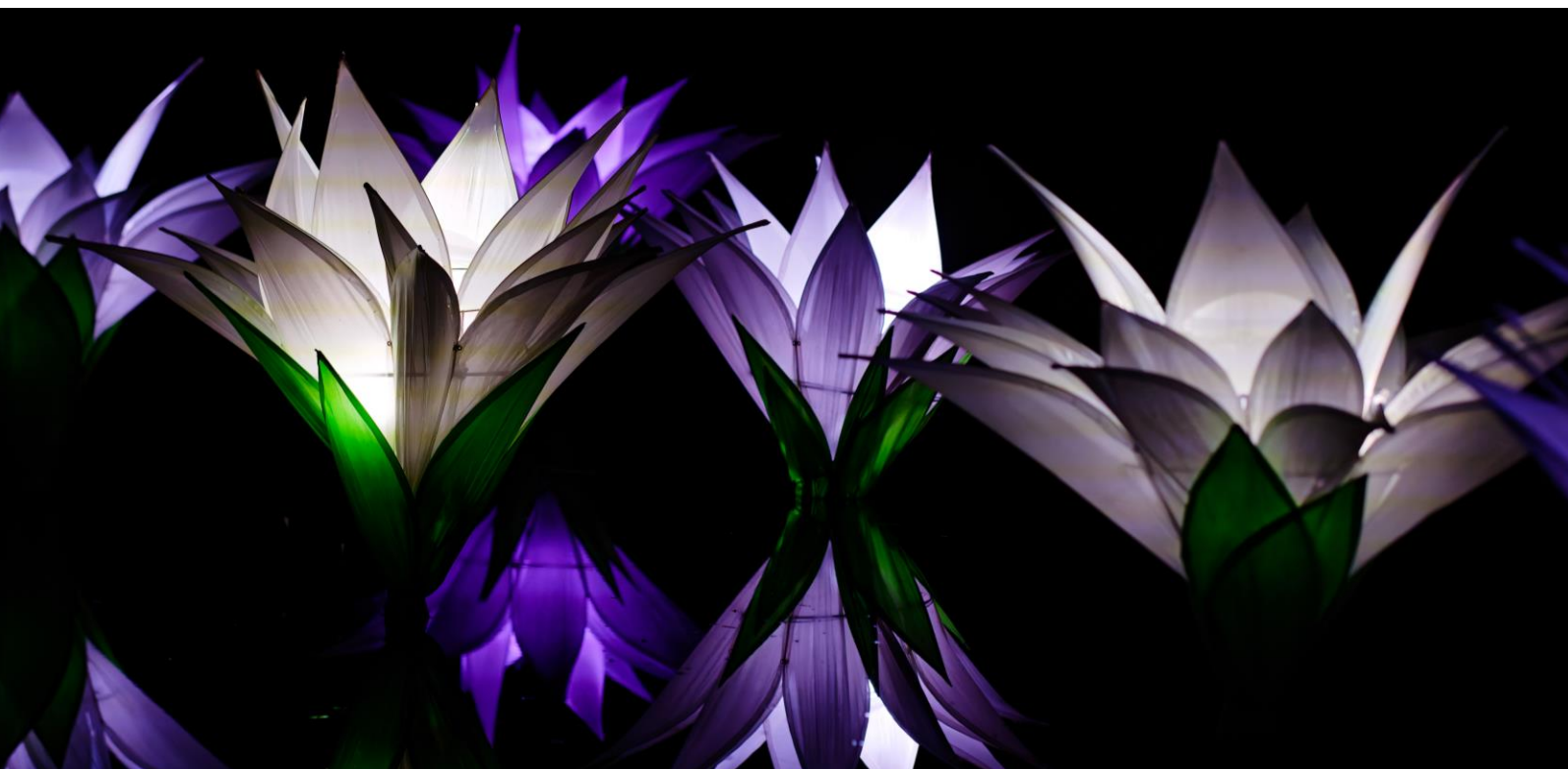
See giant lily sculptures out on the water as you cross the bridge. The barrier is made of rope. Please do not lean on it.



Hear an accompanying soundscape with soft melodies. *Poorneet Tadpole Season* by James Henry. [Click Here](#) to listen.



Scan the QR code to learn more about this artwork and the artist.



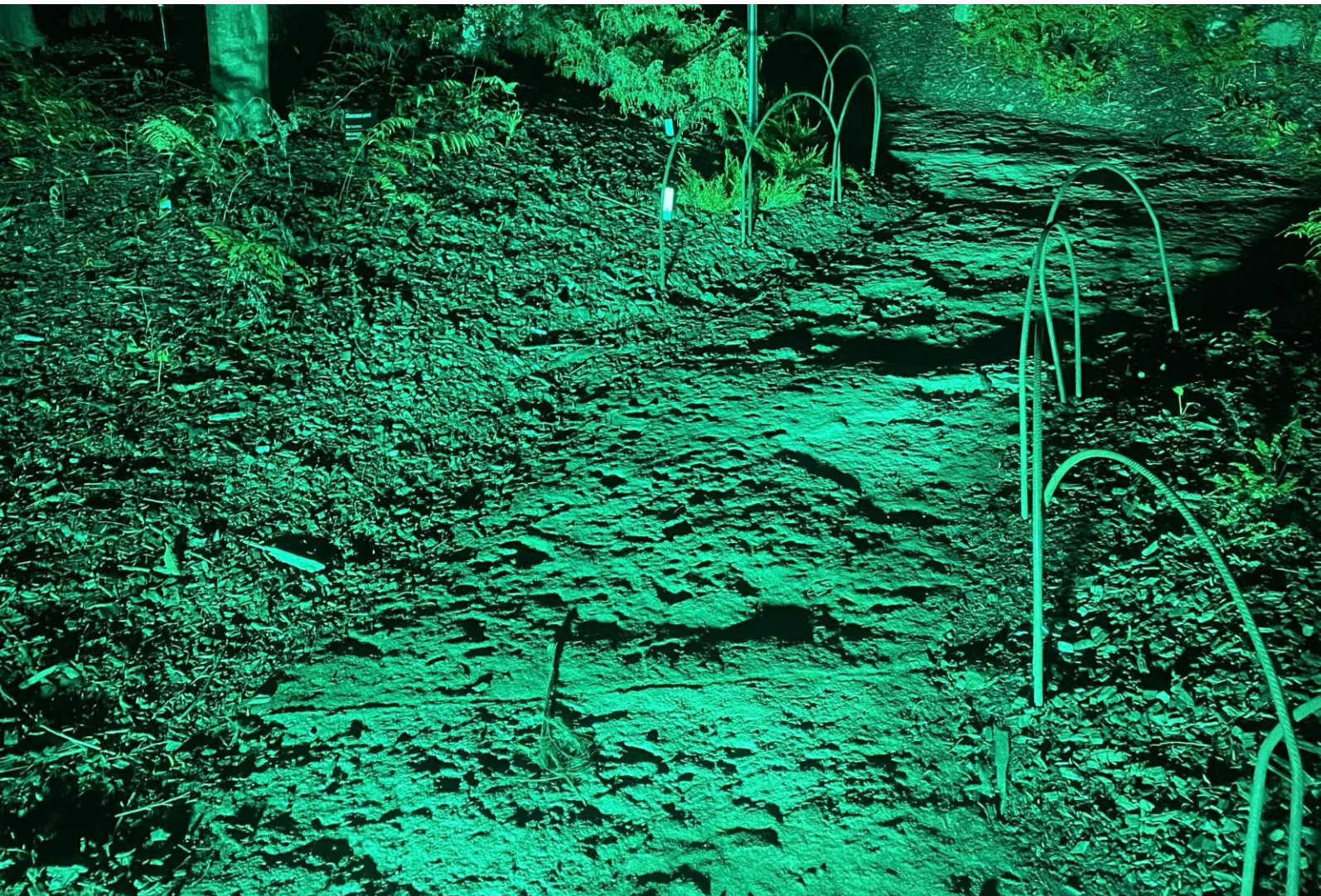
Finding your way to the end of the trail



You'll see some lit up trees and paths as you make your way to the exit.



Hear an accompanying ethereal soundscape as you walk along the path.



Thank you for attending *Lightfall.*

You end the trail at a different place to where you started. So please pay attention to where you park your car.

We hope you enjoy the experience. For any further questions or queries, please send an email to Lightfall@rbg.vic.gov.au

